

尚川精機[®]

SUNZUANT

PRECISION MACHINERY

射出机压铸机快速换模系统 >>>>

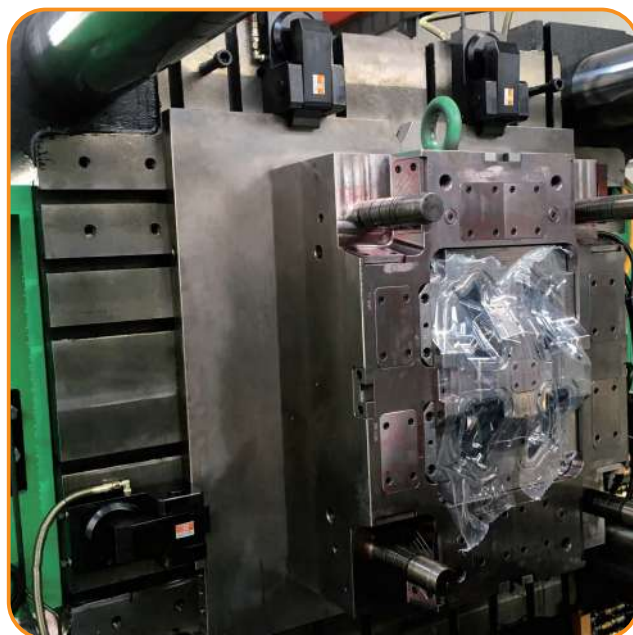
For Injection Molding Machines & Mold Casting Machines

3

分钟换模

快速换模专家

<http://www.sunchina168.cn>





尚川簡介 COMPANY PROFILE

東莞市尚川精密機械有限公司是一家專業製造和銷售沖床、注塑機、壓鑄機、油壓機等並已取得CE、ISO9001認證的全自動換模設備廠家，其產品包括：全自動換模台車，氣動泵浦組合、夾模器、舉模器、移模臂、電氣控制系統、超負荷保護系統以及滑塊鎖固系統等產品。

公司自2008年成立以來，全體員工秉承“尚品臻至，川壑為澤”的企業文化，以精湛的研發實力，科學的管理模式，誠信的經營態度、完整的售後服務獲得業界的認可，同時以優質的產品質量贏得了客戶和社會的高度評價。

尚川精機的主導產品為：換模台車、氣動泵單元、舉模器、移模臂、電控操作系統、超負荷保護裝置及滑塊鎖固泵等，普遍運用於各種沖床、射出機、壓鑄機等行業。

公司以顧客至上，客戶滿意，質量第一，持續改進為宗旨，通過提供優質的產品和服務，最大限度滿足客戶的需求！

Dongguan SUNZUANT precision machinery co., LTD is a professional manufacture and sale of punching machine, injection molding machine, die-casting machine, hydraulic press and have achieved CE, ISO9001 certification of automatic mold changing equipment manufacturers, its products include: automatic pallet of the mould, pneumatic pump combination, die, die for, moving die arm, electric control system, overload protection system and slider locking system, etc.

Since our company established, All our employees adhering to the corporate culture of "Value quality, respect humanity" We gain recognized by the industry with excellent R & D strength, scientific management mode, honesty business operations of attitude and complete after-sale service, Besides, our high quality product gain highly regarded from clients and society.

Leading products of SUNZUANT is Exchange Cart, Pneumatic pump unit, TX Die Clamp, TY Die Clam, Die Lifter Series, Electronic Control Operation Panel, Overload Pump and Slide Lock etc. Those acts press, Injection molding machine and Quick Die Change System For Mechanical Press.

The company is customer-oriented, customer satisfaction, quality first, continuous improvement to the purpose, by providing quality products and services to meet the customers' needs

▼ 尚川快速換模系統射出機壓鑄機工作臺盤夾持圖示

SUNZUANT Q.M.C.S. CLAMPER FIXED ON PLATE

SUNZUANT Q.M.C.S. 提供給各式射出機、壓鑄機的快速換模專用元件，此系統的使用，不僅減少了閒置時間，並且大大的促進了產能的提升，使得生產管理更為合理化。

The SUNZUANT Q.D.C.S. provides different injection molding and hydraulic mold casting machinery with many types of efficient quick mold changing systems, which highlight time saving and enhanced productivity for more rationalized production management.



▼ 標準型式選用表

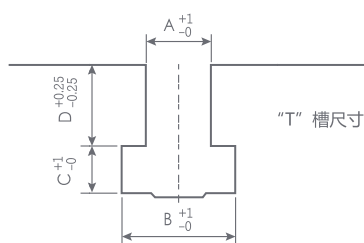
Q.M.C.S. TYPICAL SECTIONS BY INJECTION MOLDING MACHINES & MOLD CASTING MACHINES

◎ 射出成型機、壓鑄機快速換模系統標準形式選用表

Q.M.C.S typical sections by injection molding machines & mold casting machines.

夾模器Clamper						气动泵組合 Pump Model	建议模板厚度 Plate Thickness		建议T槽尺寸 T-Slot Size				
机台能力 TON	活动側 Moving	数量 PCS	固定側 Fixed	数量 PCS	总夾模力 Total		活动側 Moving	固定側 Flxed	A	B	C	D	
150	TY-2	4	TY-2	4	16TON	SP6308U-□-□C	35	35	22 ^{+1.0} ₋₀	37 ^{+1.0} ₋₀	16 ^{+1.0} ₋₀	24±0.25	
250	TY-4	4	TY-4	4	32TON		SP1014U-□-□C	40	40	28 ^{+1.0} ₋₀	48 ^{+1.0} ₋₀	20 ^{+1.0} ₋₀	28±0.25
350	TY-6	4	TY-6	4	48TON			50	50	28 ^{+1.0} ₋₀	48 ^{+1.0} ₋₀	23 ^{+1.0} ₋₀	28±0.25
550	TY-10	4	TY-10	4	80TON	50		50	36 ^{+1.0} ₋₀	56 ^{+1.0} ₋₀	25 ^{+1.0} ₋₀	28±0.25	
850	TY-16	4	TY-16	4	128TON								
1000	TY-16	6	TY-16	6	192TON								
1300	TY-25	4	TY-25	4	200TON								
1600	TY-25	6	TY-25	6	300TON								

◎ 建议T槽尺寸 / T-Slot Size



◎ 夾模器 / Die Clamp



◎ 氣動泵組合 / Power units



▼ 尚川快速換模導入效益與選用指引

SUNZUANT Q.M.C.S. BENEFITS & SYSTEM COMPONENTS SELECT

SUNZUANT Q.M.C.S. 提供給各式射出機、压铸機模具多样性的快速換模專用元件，此系統的使用，不僅減少了閑置時間，並且大大促進了產能的提升，使得生產管理更為合理化。

The SUNZUANT Q.M.E.C provides different injection molding and hydraulic mold casting machinery with many types of efficient quick mold changing systems, Which highlight time saving and enhanced productivity for more rationalized production management.



◎ Q.M.C.S.選用指引 / Q.M.C.S. Selection

模板 Mold Plate	換模方式 Mold Change	使用夾模方式 Clamping type	條件與特征 Condition & Character
不能統一情形時 No Union	吊車（垂直放入） Put Vertically	移動式夾模器 Moving Clamper	必須在盤面上加T溝，或者安裝T溝板 To Be With T-Slot
可以統一情形時 Union	吊車（垂直放入） Put Vertically	固定式移動式夾模器 Fixed & Moving Clamper	夾模器固定于盤面或在盤面上移動 Clamper Fixed or Moving On Plate
	臺車（水平放入） Put Horizontally	固定式夾模器 Fixed Clamper	將輸送滾輪（或滑軌）安裝于盤面，必須有臺車或模具交換臺，換模時間極短，作業最簡單，亦可全自動化。 Install roller or sliding rail upon the plate, Use cart of mold exchange table for the shortest possible mold changing time and easy operation.

※ 註：SUNCHINA Q.M.C.S. 為使您能依照模具尺寸，射出成形機、壓鑄機的規格來選定，準備有以上各種機型。請考慮工廠的布局以及將來的生產計劃，待標準化之後，選擇最合適的方式。

The following specifications are available for you to choose in accordance to your injection molding requirements and actual production situations. Make sure of your production plans, standard production procedure before choosing the product that suits you best.

▼ 模具垂直放入圖例

DEMONSTRATION OF PUT MOLD VERTICALLY

一般射出成型機或壓鑄機模具垂直放入方式使用最多，SUNZUANT Q.M.C.S 提供夾模器可移開方式換模系統，不僅減低機臺的閉置時間，並且促進了產能的提升，使用生產管理更為合理化、自動化。

Most of the molds for injection molding and mold casting machines are fitted vertically. SUNZUANT Q.M.C.S. however adopts removable mold changing system that not only saves idle time for enhanced production efficiency but also spurs even rationalized and automated production management.

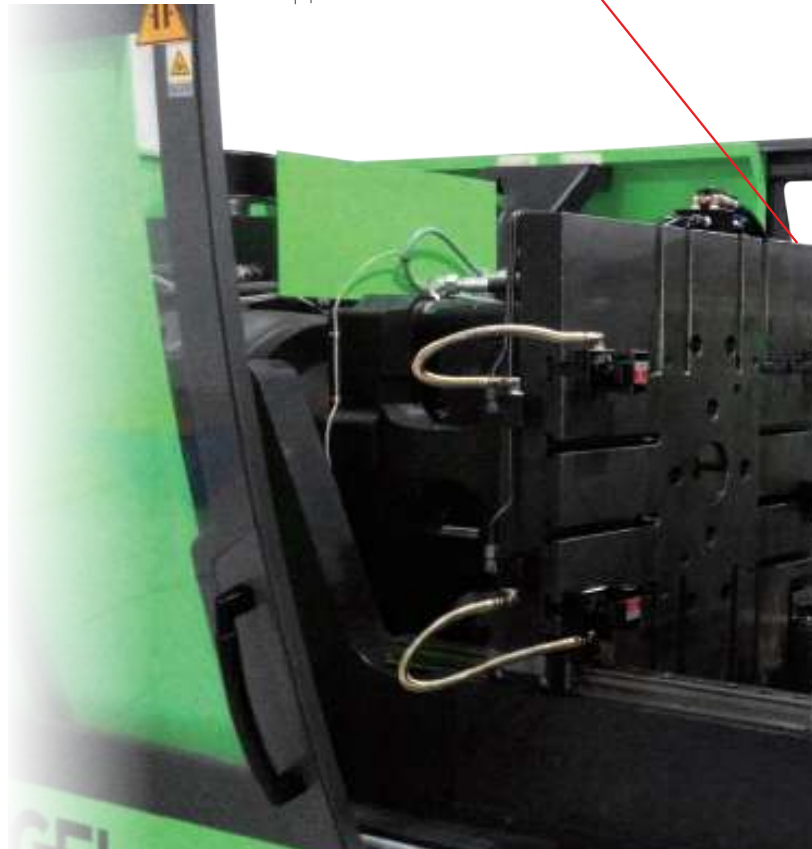
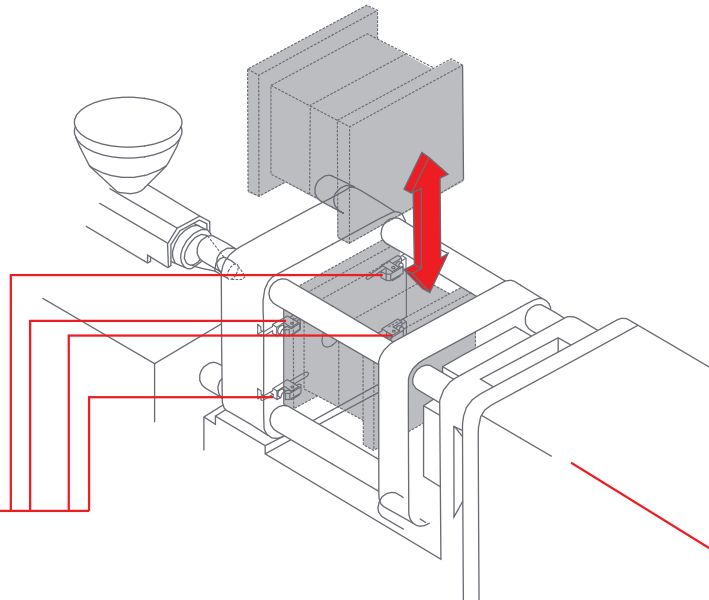
模具垂直放入時交換方式

Vertical Type Mold Change

◎ 夾模器 / Die Clamp



◎ 氣動泵組合 / Power units



▼ 模具水平放入圖例

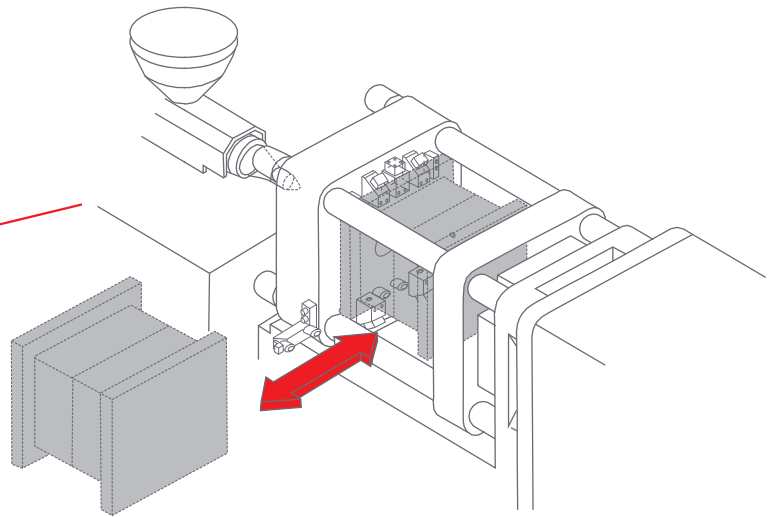
DEMONSTRATION OF PUT MOLD HORIZONTALLY

模具水平放入時，可使用換模臺車方式，更換模具則更具安全性，并達成整廠快速換模系統之規劃，使得模具之輸送及儲存更具自動化。

When molds are fitted horizontally, mold changing cart may be used for safe operation and realization of quick mold changing for entire factory with increased automation of mold delivery and storage.

模具水平放入時交換方式

Horizontal Type Mold Change



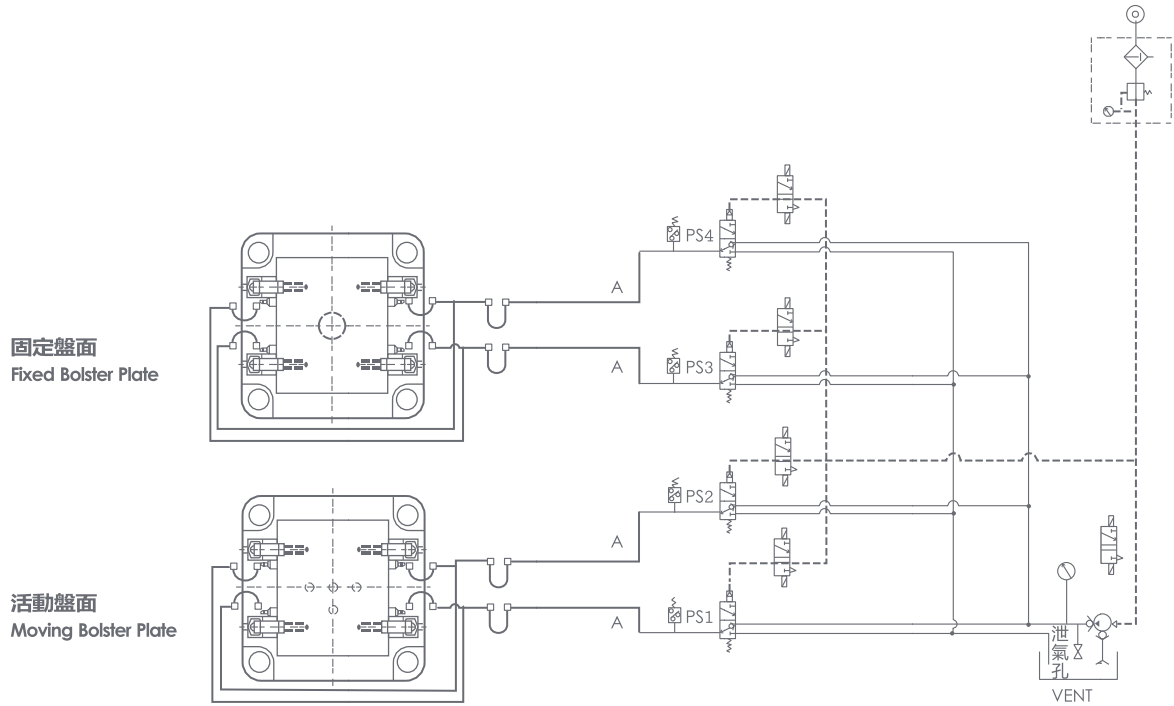
◎ 操作箱 / Control box



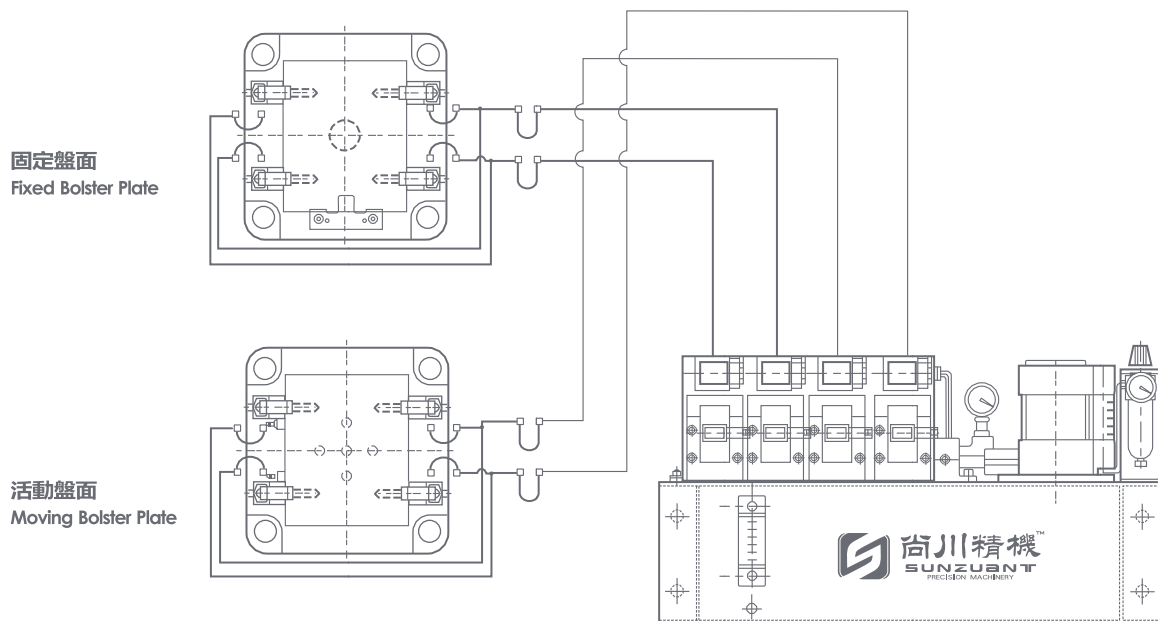
▼ 油壓系統回路圖

SUNZUANT Q.M.C.S. HYDRAULIC SCHEMATICS

◎ 油壓系統回路圖 / Hydraulic Schematics



◎ 油壓系統回路圖 / Hydraulic Schematics

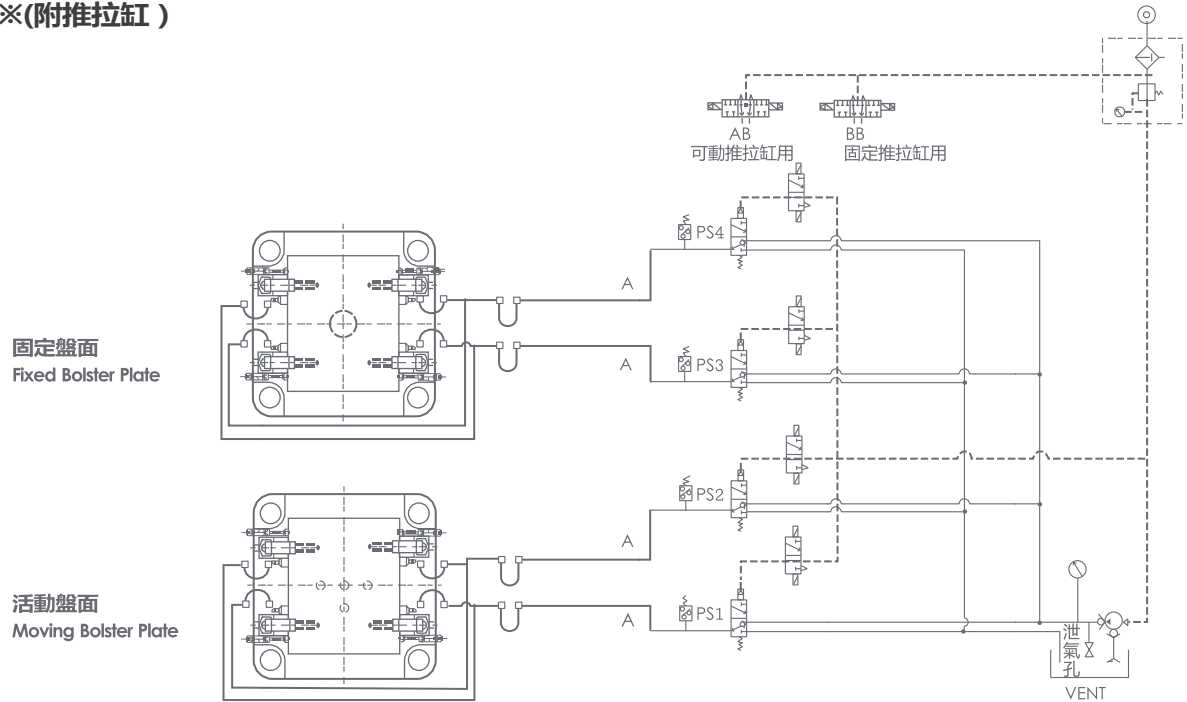


▼ 射出機&壓鑄機範例

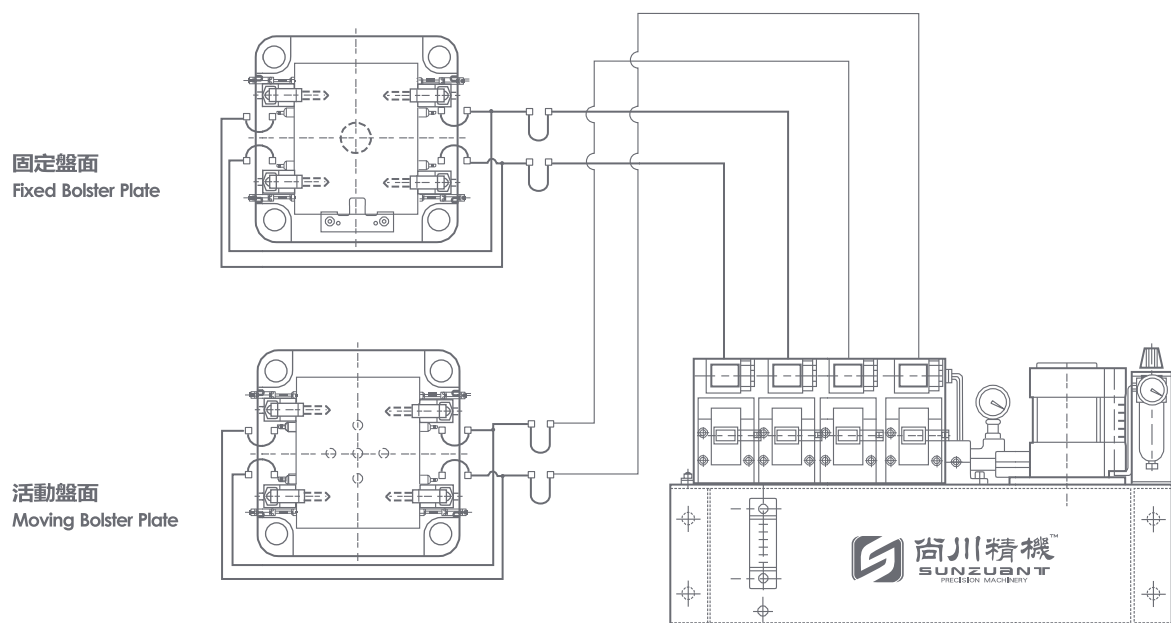
APPLICATION OF INJECTION & CASTING MACHINES

◎ 油壓系統回路圖 / Hydraulic Schematics

※(附推拉缸)



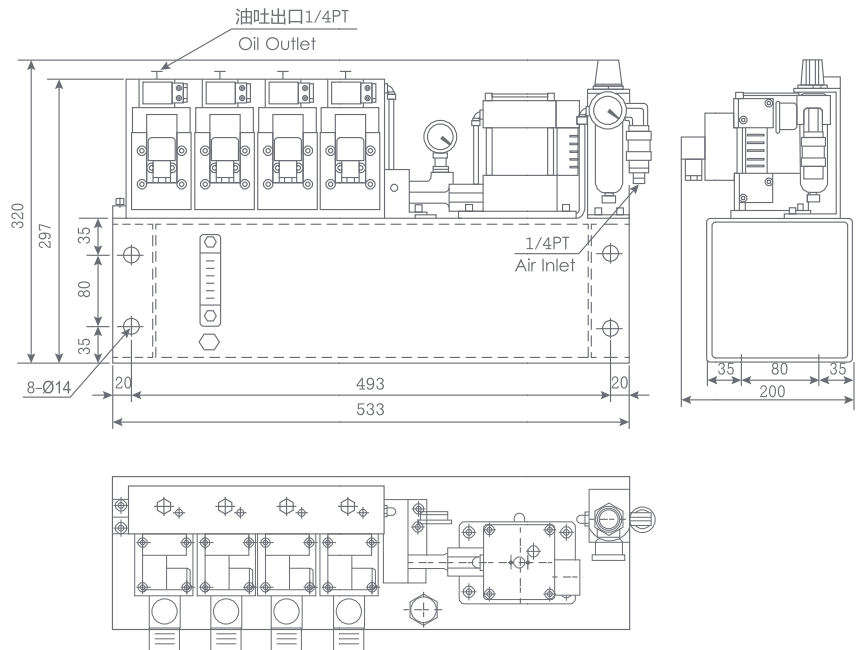
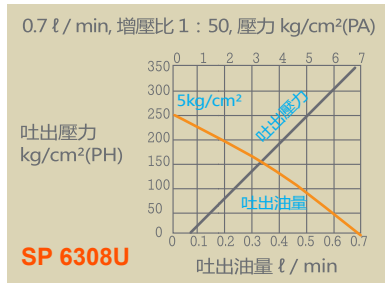
◎ 油壓系統回路圖 / Hydraulic Schematics



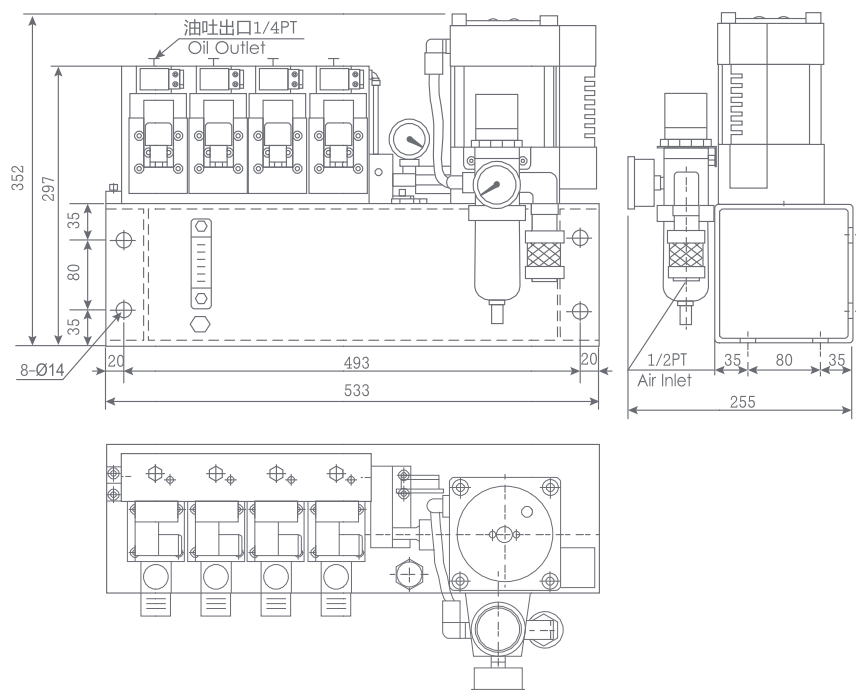
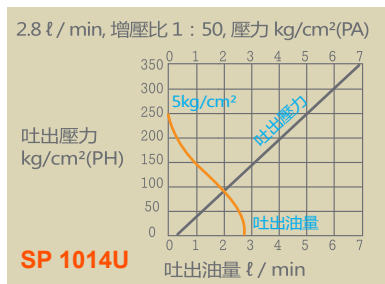
▼ 氣動泵組合外型尺寸

AIR-DRIVING PUMP UNITS SELECTION

◎ 型號 / Model: SP6308U Pump



◎ 型號 / Model: SP1014U Pump



▼ TY型夾模器

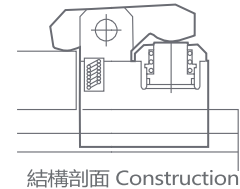
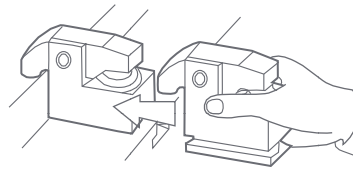
TY TYPE DIE CLAMP OF SUNZUANT Q.M.C.S.

此型夾模器以杠桿原理作用，夾持模沿，並不需“U”溝，因此有更寬廣的適用範圍。

Because this lever-type clamp does not require a U-cut on the die shoe, it may be used in a wide range of applications. The base of the clamp is machined to fit the T-slot on the bolster. The flange-mount model clamp may be bolted onto the bolster. The automatic slider model makes remote control possible.



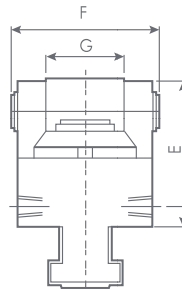
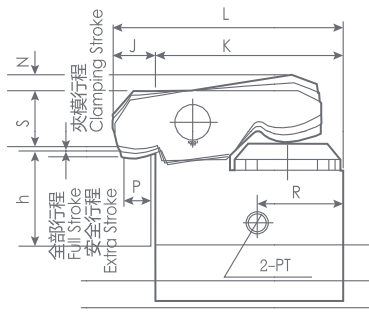
◎ 規格特性 / Specifications



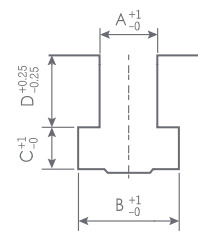
- ✧ 安全行程為全部行程與夾模行程之差值，為特別的安全預留量。
Extra Stroke is the difference value between full stroke and clamping stroke with the extra space for safe operation.

型號 Model	TY-2	TY-4	TY-6	TY-10	TY-16	TY-25
夾持力 (於油壓250Kg/cm ²)tons Clamping Force(at 250Kg/cm ²)	2	4	6.3	10	16	25
全部行程 (X)mm Full Stroke mm	7	7	8	8	8	8
夾模行程 (Y)mm Clamping Stroke mm	2	3	4	3	3	3
安全行程 (Z)mm Extra Stroke mm	5	4	4	5	5	5
夾模器缸體容量 (全行程)cc Cylinder Capacity at Full Stroke cc	6.5	13.2	22.3	37	61	93

◎ 外型尺寸 / Outline Dimensions



“T” 槽尺寸



型號 Model	MIN.E	F	G	J	K	L	MAX.N	P	R	MIN.S	PT	MIN.C
TY-2	59	65	28	22	85	107	10	12.5	48	27	1/8	9.5
TY-4	85	87	40	30	120	150	10	16	58	33	1/4	12
TY-6	94	97	44	34.5	133	167.5	11	20	68	40	1/4	14
TY-10	105	110	50	30	165	195	11	20	82	53	1/4	16.5
TY-16	120	125	60	35	200	235	12	20	96	67	1/4	19
TY-25	133	155	73	35	240	275	13	20	110	81	1/4	22

型號 Model	A	B	C	D
TY-2	22	37	16	24
TY-4	22	37	16	24
TY-6	28	48	20	28
TY-10	28	48	20	28
TY-16	28	48	23	28
TY-25	36	56	25	28

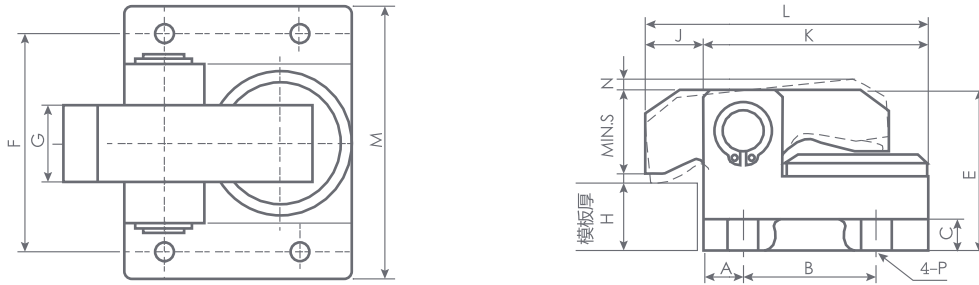
選用泵浦 Power units model
SP6308U-□-□
SP1014U-□-□

⊗ 註：模沿厚度(h)及T槽(A.B.C.D.)尺寸如為既有(特殊)尺寸，請於訂購時確認之。
before purchase, please verify mold edge thickness (h) and T Slot (A.B.C.D.) as standard or special dimensions.

▼ TY-B & C型夾模器型號

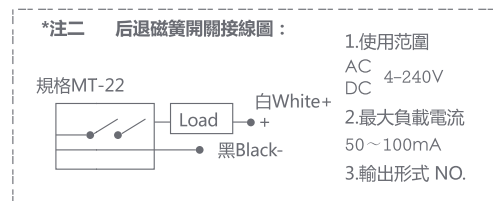
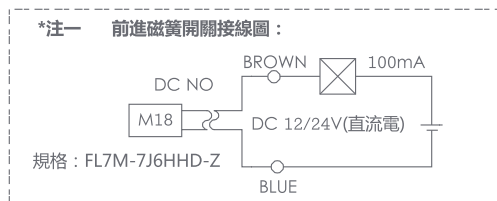
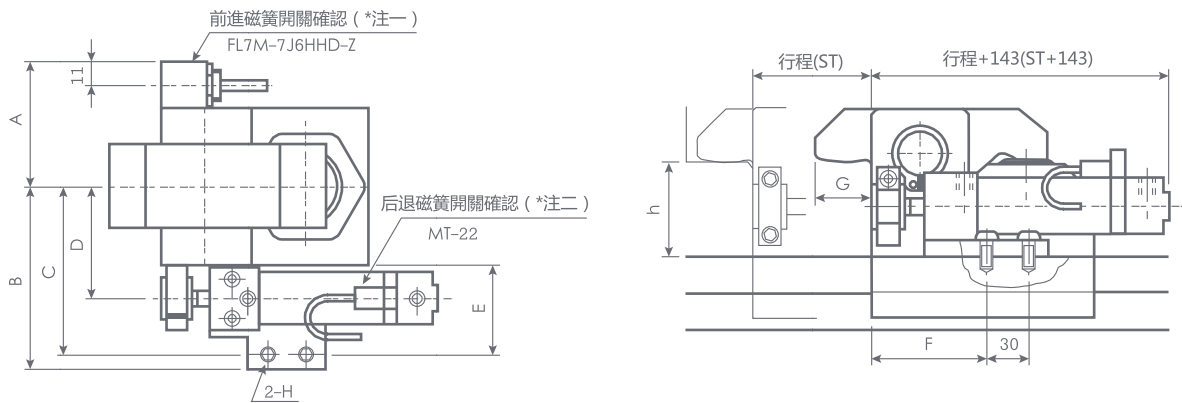
TY-B&C TYPE DIE CLAMP MODELS

◎ TY-B型夾模器型號 (外型尺寸) / TY-B Type Die Clamp Models (Outline Dimensions)



型號 Model	A	B	C	MIN.E	F	G	M	J	K	L	N	MIN.S	P
TY-2B	15	50	12	59	80	28	100	22	85	107	10	27	M10×25L 螺絲 Screw
TY-4B	15	72	18	85	110	40	135	30	120	150	10	33	M12×40L 螺絲 Screw
TY-6B	28.5	76	25	94	120	44	150	34.5	133	167.5	11	40	M16×50L 螺絲 Screw

◎ TY-C型夾模器型號 (外型尺寸) / TY-C Type Die Clamp Models (Outline Dimensions)



	A	B	C	D	E	F	G	H(螺絲：臺盤攻牙深度)	氣缸規格
TY-2C	51	93	86	54	57	82	22	M10×25L:Ø8.6鑽×25深	MB32*行程
TY-4C	62	104	97	65	57	82	30	M10×25L:Ø8.6鑽×25深	MB32*行程
TY-6C	67	127	115	75	70	85	30	M12×25L:Ø10.3鑽×25深	MB40*行程
TY-10C	77	132	120	80	70	85	30	M12×25L:Ø10.3鑽×25深	MB40*行程
TY-16C	82	142	130	90	70	85	35	M12×25L:Ø10.3鑽×25深	MB40*行程
TY-25C	94.5	154.5	142.5	102.5	70	85	35	M12×25L:Ø10.3鑽×25深	MB40*行程

▼ 操作箱

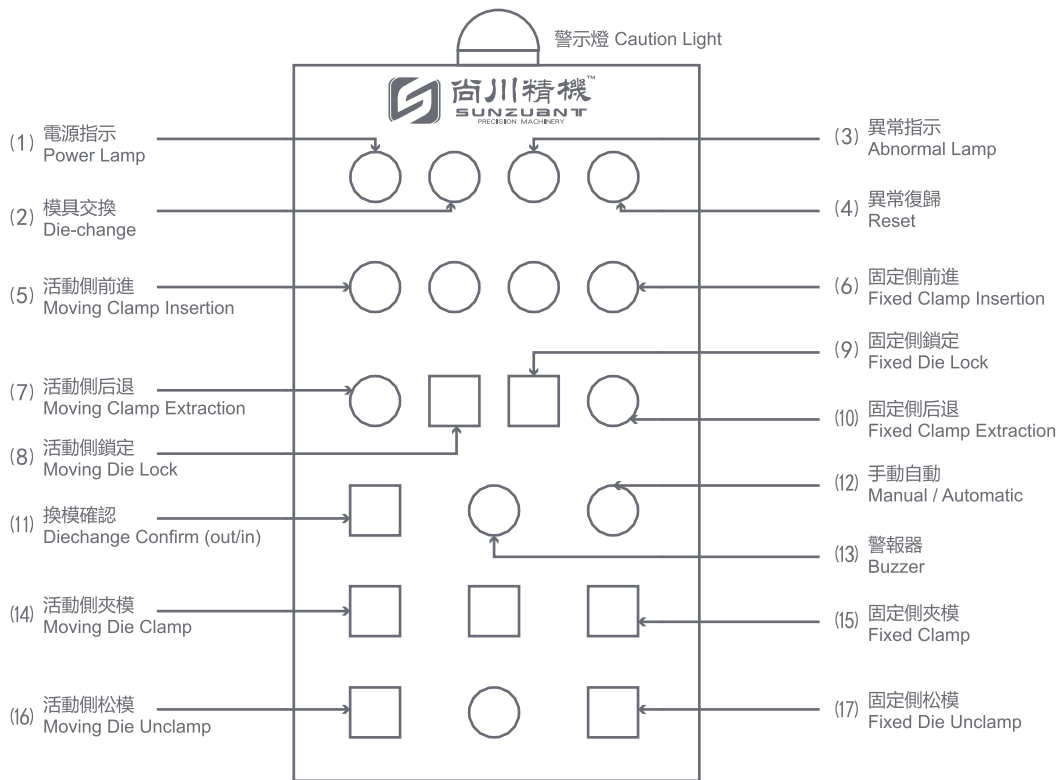
CONTROL BOX OF SUNZUANT Q.M.C.S.

操作控制箱為本快速換模系統狀態顯示，與功能操作介面，上半部（1~10）為顯示與自動操作功能，下半部（11~17）為手動操作功能按鍵。

The control panel offers an interface to monitor and control operations of the quick mold change system.

The upper half of the screen (lines 1~10) displays automatic functions while the lower half (lines 11~17) is used for operator-controlled functions.

◎ 操作箱面板 / Control Box Panel



▼ 快速換模系統之相關零件

SUNZUANT Q.D.C.S. RELATED PRODUCTS FOR PRESS MACHINE USE

◎ 氣動泵單體 / Air Pump



	空氣壓力5kg/cm ² 時出力 (AIR AT5kg/cm ²)	增壓比		空氣壓力5kg/cm ² 時出力 (AIR AT5kg/cm ²)	增壓比
06	420 (kg/cm ²)	1:84	12	100 (kg/cm ²)	1:20
07	300 (kg/cm ²)	1:60	14	80 (kg/cm ²)	1:16
08	250 (kg/cm ²)	1:50	16	50 (kg/cm ²)	1:10
09	200 (kg/cm ²)	1:40	20	40 (kg/cm ²)	1:8
10	150 (kg/cm ²)	1:30	24	26 (kg/cm ²)	1:5

◎ AV氣控閥 / Air Control Valve

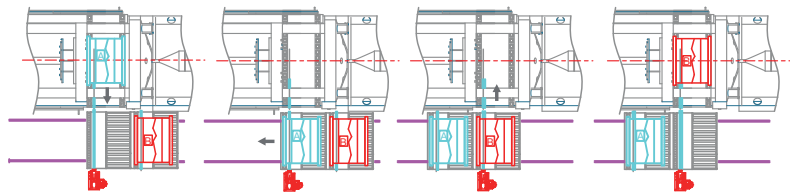


◎ 回轉接頭 / Rotary Unit

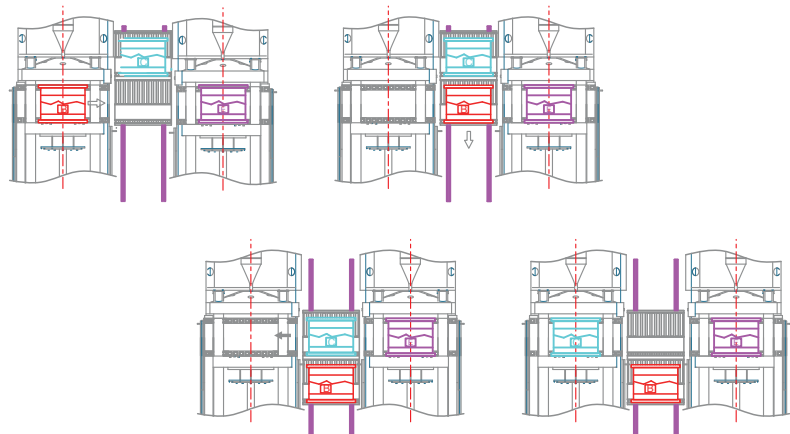


◎ 換模臺車系統 / Examples of Die Cart System

单机使用
Single-Machine Use



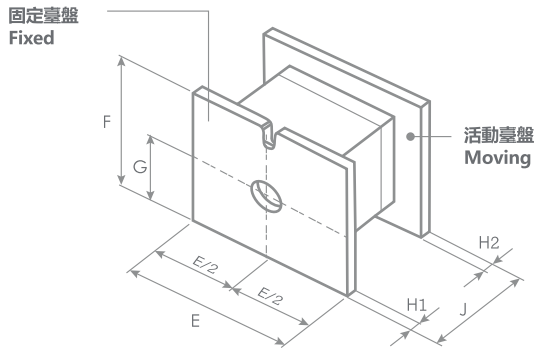
两机共用
Sharing Of Two Machines



▼ 快速換模系統之訂購資料表

SUNZUANT Q.M.C.S. QUOTATION INFORMATION FORM

◎ 模具外型尺寸圖 / Die Dimensions



m/m

項目 Item	E	F	G	J	H1	H2
尺寸 Size						

⋆ 註：1. 未指示公差處，以一般公差加工
2. 各鉗孔，攻牙孔倒角基準：
Clamps with a dimension greater than Max. h+d are also optionally available.

◎ 設備部份 / Part About Press

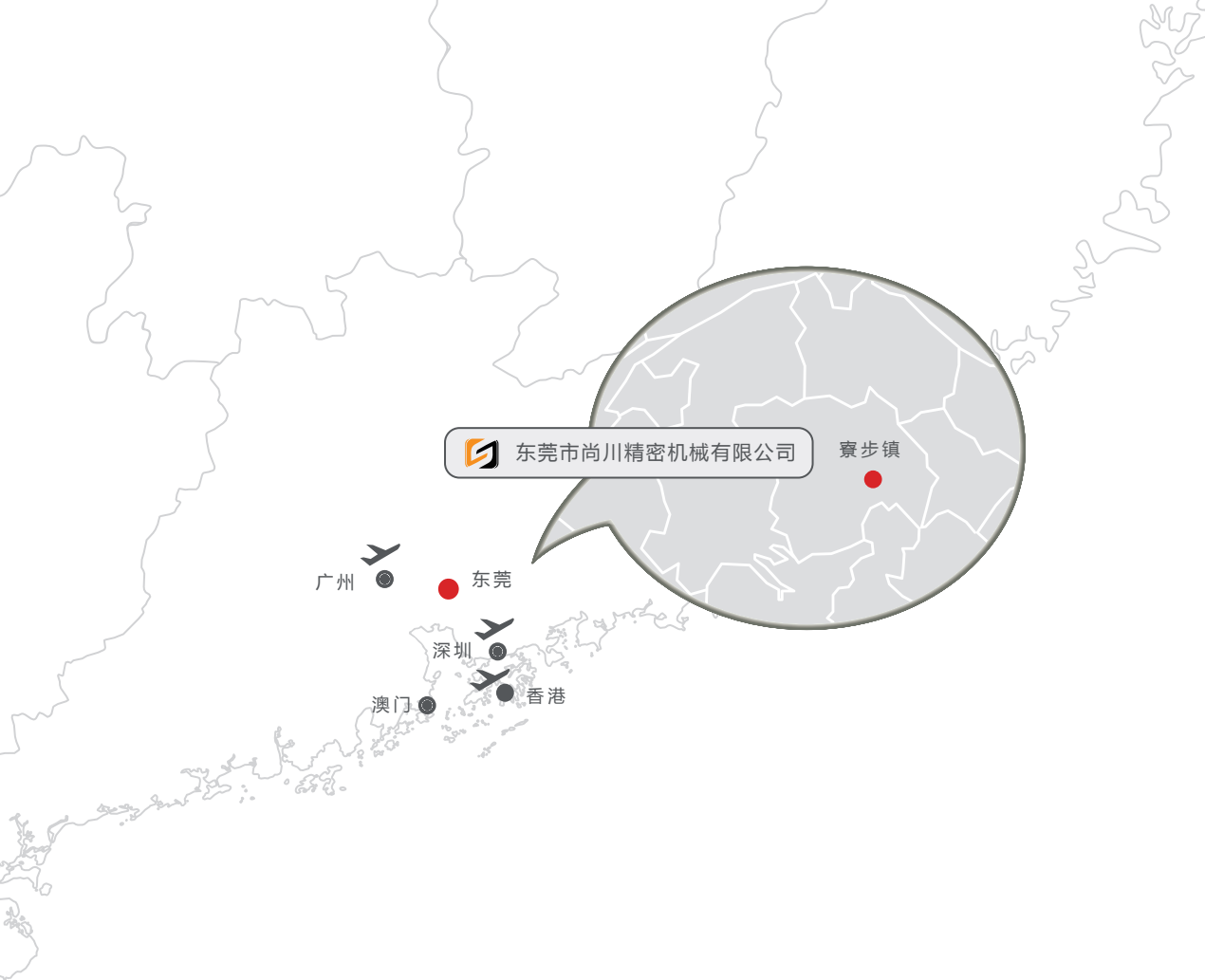
A1 新購或舊有 / New or Existing	<input type="checkbox"/> 新購 / New	<input type="checkbox"/> 舊有 / Existing					
A2 製造商及型號 / Manufacturer and model	製造商 Manufacturer	型號 Model					
A3 射出及壓鑄能力 / Tonnage	<input type="checkbox"/> tf	<input type="checkbox"/> 美制 / US	<input type="checkbox"/> 公制 / Metric				
A4 固定臺盤尺寸 / Fixed dimensions	(E) <input type="text"/>	X(F) <input type="text"/>					
A5 活動台盤尺寸 / Moving dimensions	(E) <input type="text"/>	X(F) <input type="text"/>					
A6 T槽 (詳細測量) / T-slot	<input type="checkbox"/> 有 / Yes	<input type="checkbox"/> 沒有 / No	尺寸 Dimension	a: <input type="text"/>	c: <input type="text"/>	b: <input type="text"/>	d: <input type="text"/>


◎ 模具部份 / Part About Dies

B1 最大重量 / Max. weight	<input type="text"/>	kg (lbs)		
B2 最大尺寸 / Max. dimensions	(W) <input type="text"/>	x(W) <input type="text"/>	x(H) <input type="text"/>	mm(inch)
B3 螺栓用 "U" 槽 / U-cut for bolting	<input type="checkbox"/> 有 / Yes	<input type="checkbox"/> 沒有 / No		
B4 模具邊沿厚度 / Die shoe thickness	<input type="text"/>	mm(inch)		
B5 模具底部 / Bottom	<input type="checkbox"/> 平面 / Plain	<input type="checkbox"/> 格子狀 / Lattice		
B6 特殊需求 / Special requirements	<input type="text"/>			

◎ 基本資料 / Your Information

公司名稱 / COMPANY:	聯絡人 / ATTN:
電話 / TEL:	傳真 / FAX:
地址 / ADD:	



 东莞市尚川精密机械有限公司

寮步镇

广州
东莞
深圳
澳门
香港



东莞市尚川精密机械有限公司

廣東省東莞市寮步鎮石龍坑崗頭大富地工業區
電話：0769-8938 4111 傳真：0769-8938 4311
售前郵箱：service01@sunchina168.cn
售後郵箱：service02@sunchina168.cn
網址：<http://www.sunzuant.cn>